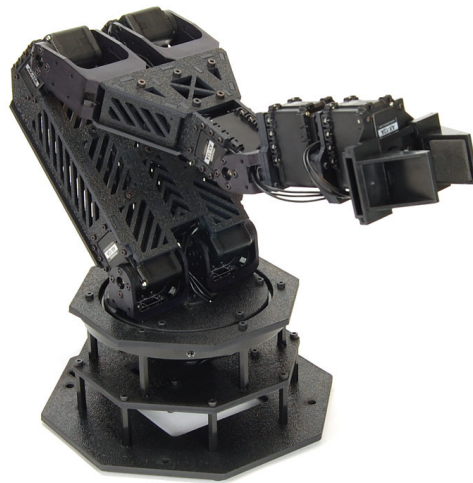


QUICK START GUIDE

PhantomX Reactor Arm

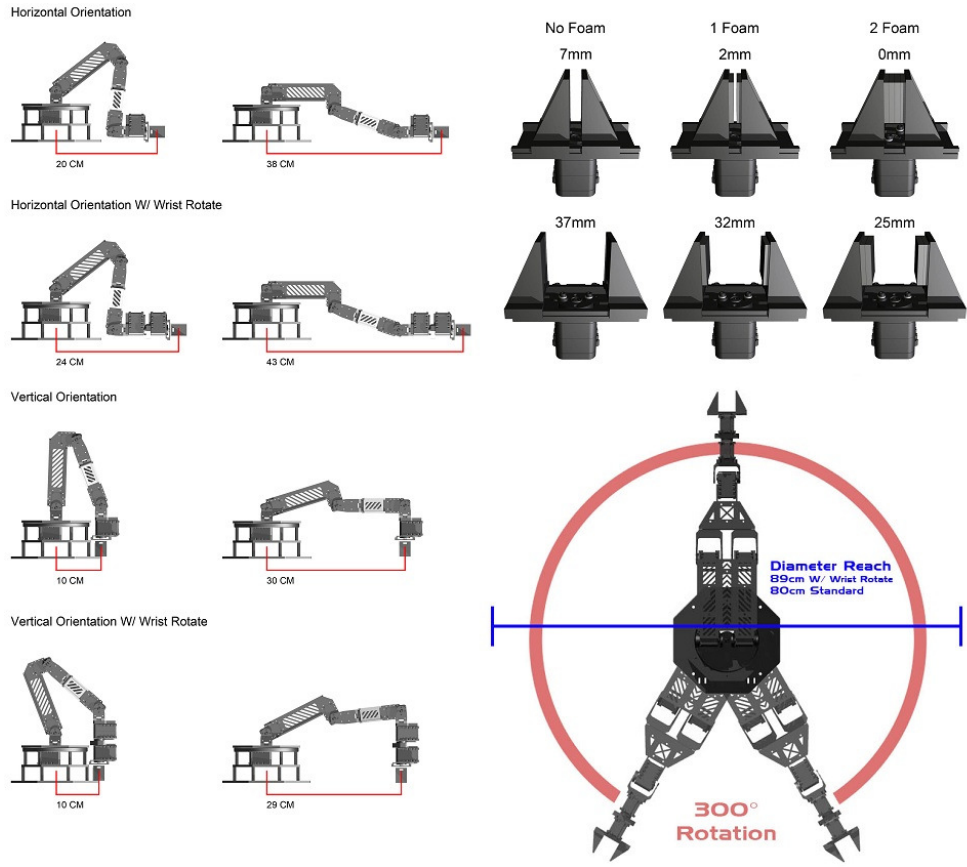
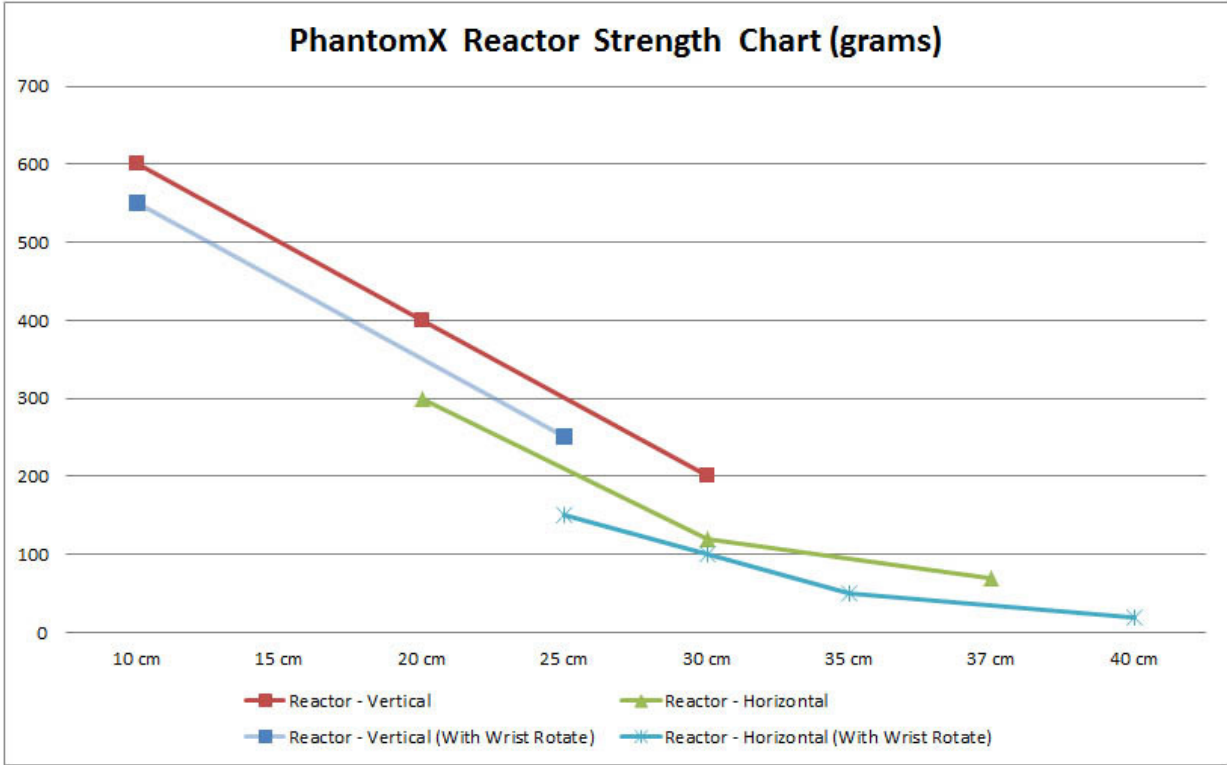


INTRODUCTION

Congratulations on your purchase of the PhantomX Reactor Robot Arm! The first thing we recommend when unpacking your kit is to refer to the Assembly Guide and take a quick inventory of all of your parts using the parts list (found at the end of this packet).

<http://www.trossenrobotics.com/productdocs/assemblyguides/phantomx-deluxe-robot-arm.html>

- 1) Be sure to read through the Assembly Guide prior to starting your build so that you have a good overview of the build process. Each servo has the network ID preset, pay close attention to which servos you are using to assemble each step; there is a diagram in the Assembly Guide that explains which servos go where.
- 2) The Arbotix Robocontroller uses the Arduino IDE to create and upload firmware. If you are not already familiar with the Arduino IDE, we recommend reading through some of the documentation available on the Arduino website (<http://arduino.cc>). The Arduino IDE needs to be configured in order to recognize and program the Arbotix; information on how to do this can be here: <http://code.google.com/p/arbotix/wiki/GettingSetup>
- 3) Once your Arduino IDE is properly configured, users can write their own programs and upload them to the Arbotix. Note: You can power the Arbotix from the FTDI cable by changing the appropriate jumper, this is useful for setting it up and testing prior to having your power wires or a battery installed (just remember to set it back when you're done!)



PHANTOMX REACTOR ROBOT ARM - PARTS CHECKLIST

HARDWARE KIT

- 1x Reactor Hardware & Frames Kit
- 1x Nut & Bolt Hardware Kit

SERVO & CABLES

- 7x AX Dynamixel Servos (verify ID programmed)
- 1x AX Dynamixel Servo (If Wrist Rotate option)

ELECTRONICS PACK

- Arbotix
- FTDI Cable
- 12v 5amp Power Supply
- 8x 200mm 3P Cables

PHANTOMX REACTOR ROBOT ARM (NO SERVO) - PARTS CHECKLIST

HARDWARE KIT

- 1x Reactor Hardware & Frames Kit
- 1x Nut & Bolt Hardware Kit

ELECTRONICS PACK

- Arbotix
- FTDI Cable
- 12v 5amp Power Supply
- 8x 200mm 3P Cables

PHANTOMX REACTOR ROBOT ARM (BAREBONES) - PARTS CHECKLIST

HARDWARE KIT

- 1x Reactor Hardware & Frames Kit
- 1x Nut & Bolt Hardware Kit